



# DESSERTS



FOOD SERVICE BROCHURE

---

**Dear partner,**

Harkening to the needs of the market and relying on our accumulated experience to this day, our company moves one step closer to you, presenting a wide variety of desserts, in the hope of embarking on a sweet journey with you. We create the finest and tastiest desserts with Rodoula's unique recipes, the desserts are characterized by their premium quality and outstanding taste. Our overarching purpose is to offer to all our clients, pastry products that will give added value by their unique decor and mouthwatering flavors, soon they are going to become an important asset for your store.

**IMPORTANT FACTORS WHEN WORKING WITH RODOULA**

**Quality**

We ensure the high quality of our products by our strict selection of raw materials, the necessary processing procedures, our constant quality controls and last but not least our highly trained and skilled staff. Our new, modern, high-standard factory, ensures products of high quality and gustatory identity. Our company is ISO 9001, ISO 22000, IFS, BRC, Halal certified.

**Variety**

We have a wide variety of desserts, which includes the most beloved and popular choices, as well as pioneering diversified products.

**Innovation**

We are in constant collaboration with both established and international pastry schools, and distinguished pastry chefs, Greek and foreigners, in order to keep offering you new and special flavors. We are constantly searching and seeking new trends and developments in confectionery sector in the Greek, European and American markets.

**Ease**

Our products constitute a quick and easy solution, thawing them 3-4 hours before use, or directly available for serving.

**Flexibility**

Flexibility ensues in both seasonal traffic (holidays, weekends) and in periods of slow activity, keeping your operating costs steady and reduced.

**Retrenchment**

Our desserts are rationed, allowing you to take stock and calculate cost easily at any time, thus avoiding wastage of products and stockpiling final products or raw materials.

**Effectiveness**

The expanded variety of products, innovative flavors, freshly kept products in your showcase, alternative pricing proposals, lead to pleased customers.

**Profits**

Pleased customers increase footfall and broaden customer base, increasing total sales, thus maximizing your profits.

**Trust**

Our constant presence and cooperation with you, in combination with our expertise in the category of making products that appeal exclusively to you and your business, suggest that you can depend on us and trust us regarding desserts as well.

Regards,  
Panagiotis Karaxalios  
Ilias Karaxalios





## INDEX

- 10** CAKES  
10 DREAM CAKES  
12 CAKES  
20 CAKES DELUXE  
22 CAKES PRECUT
- 24** WEDDING-CHRISTENING DESSERTS
- 26** LOGS
- 28** INDIVIDUAL CAKES  
31 INDIVIDUAL CAKE HEART SHAPE  
32 INDIVIDUAL CAKE DREAM  
34 INDIVIDUAL CAKE PYRAMID & LOW SUGAR  
36 INDIVIDUAL CAKE DELUXE  
40 SPECIAL SWEETS  
41 LOW SUGAR
- 42** BATON
- 46** DAILY SWEETS - INDIVIDUAL
- 48** DAILY SWEETS - MINI
- 52** PASTRY BOWLS DELUXE WITH COVER
- 54** CANNED BOWL WITH COVER
- 56** BUFFET SWEETS MINI
- 60** BUFFET SWEETS
- 64** FAMILY TARTS
- 68** INDIVIDUAL TARTS
- 70** AMERICAN SWEETS
- 72** CAKES
- 74** MUFFIN & WAFFLES
- 76** GREEK SWEET BREAD
- 78** AMERICAN COOKIES
- 80** CEREAL BARS
- 86** SYPUPED PASTIES

## GENERAL HANDLING INSTRUCTIONS

We have created different product categories for all hours of the day with excellent raw materials whose promotion is achieved through right management, both during storage and their display at the points of sale. Therefore, follow the instructions below for thawing and handling, as well as for baking, where needed. The products are deep frozen and depending on their category they are subject to different handling:

### General instructions for Frozen Products:

- Keep frozen at -18 °C.
- Thaw at 0-4 °C and once defrosted, do not refreeze

### Sweets served cold:

- Refrigerator sweets, such as cakes, bowls, shots, daily sweets, mini buffet sweets, plates (baton) etc. are kept for 3-4 days at 0-4 °C. Defrost small quantities of products depending on your sales. (Attention: shelf life after thawing may change if temperature conditions are not the ones mentioned above).
- All chocolate treats have a shelf life of 6 months.
- Chocolate treats are kept at 10 to 15 °C with relative humidity 65%.

### Sweets served hot:

- Some products give you the option to serve them not only cold, but also hot, such as Soufflé, Apple Pie, Dream cake, Chocolate Pie, Walnut Pie, Orange Pie, Brownies. Regenerate them in a microwave oven directly from the freezer for 50 seconds to 4 minutes, depending on the product size and the oven.

### Buffet sweets:

- Buffet sweets, such as Apple pies, Walnut pies, Chocolate pies are kept in a cool and dry place (<22 °C) for 3 to 4 days, depending on the product.

### Syruped pastries:

- Syruped pastries are kept in a cool and dry place (<22 °C) for 4 days or in the fridge (0-4 °C) for 6 days.
- The galaktoboureko is kept in the fridge (0-4 °C) for 4 days or in a cool and dry place (<22 °C) for 1 day.
- Unbaked Syruped pastries are thawed and then baked as follows:
  - Bake in a preheated oven 185°C for 40-50 minutes until golden brown.
  - After baking, pour warm syrup (at 40°C- syrup included) over the product and wait till absorbed.

### Cereal bars:

- Cereal bars, after thawing, are kept at a temperature room (<22 °C) for 3-4 days.
- Peanut butter energy bars are preserved, after thawing, exclusively in the fridge (3-15 °C) for 3-4 days.

Note: Thawing and baking times may vary depending on the type of your equipment. See below each code for more specific maintenance and cooking instructions.

Contact the quality control department of the company for more information. **Tel. +30 210 247 8615, email: [quality@rodoula.gr](mailto:quality@rodoula.gr)**



*By acknowledging the needs of the market and relied on up-to-date accumulated research, development & experience, our company is coming a step closer to you, presenting a vast variety of desserts, hoping to offer in this category, functional solutions.*

*Which on the one hand will suit and will respect the philosophy of your stores and on the other hand will facilitate you in your daily life, through controlled costs, offering a wide variety of sweet suggestions.*



QUALITY ASSURANCE  
CERTIFICATES

ISO  
9001

ISO  
22000

IFS

BRC

HALAL

FDA  
Registered  
Facility

SMETA

TASTE AWARDS





# DESSERT

*A Dessert is not a necessity,  
It is a pleasure, a delight! It accompanies  
the happiest and special moments of our life.  
It stimulates memories, liberates the senses  
and seduces us by experiencing  
the most delectable flavors!*

# DREAM CAKES

CAKE FERRERO



71.7595 1000g/pc | 2pcs/box | 80 boxes/EU | 120boxes/USA



CAKE OREO COOKIES



71.7596 1000g/pc | 2pcs/box | 80 boxes/EU | 120boxes/USA



CAKE LION



71.7623 800g/pc | 2pcs/box | 80 boxes/EU | 120boxes/USA



CAKE MOCCA



71.7622 800g/pc | 2pcs/box | 80 boxes/EU | 120boxes/USA



CAKE ESPRESSO



71.7621 800g/pc | 2pcs/box | 80 boxes/EU | 120boxes/USA



CAKE KIT KAT



71.7624 800g/pc | 2pcs/box | 80 boxes/EU | 120boxes/USA



cake  
*Dream Ferrero*



# CAKES

## CAKE FERRERO



71.8033 1100g/pc | 2pcs/box | 80 boxes/EU | 120boxes/USA  
 71.8044 LARGE 1200g/pc | 2pcs/box | 60 boxes/EU / 90boxes/USA



## CAKE OREO COOKIES



71.8029 1000g/pc | 2pcs/box | 80 boxes/EU | 120boxes/USA



## CAKE CHOCOLATE CARAMEL



71.8839 1000g/pc | 2pcs/box | 80 boxes/EU | 120boxes/USA



## CAKE SALTED CARAMEL



71.7685 1000g/pc | 2pcs/box | 80 boxes/EU | 120boxes/USA



## CAKE BUENO



71.8025 SMALL 600g/pc | 2pcs/box | 150 boxes /pal EU | 120boxes/USA  
 71.8032 900g/pc | 2pcs/box | 80 boxes/EU | 120boxes/USA



*Cake Hemisphere*  
 ferrero

# CAKES

CAKE MIX



71.8838 1000g/pc | 2pcs/box | 80 boxes/EU | 120boxes/USA



CAKE BISCOTTINO



71.8019 850g/pc | 2pcs/box | 80 boxes/EU | 120boxes/USA



CAKE CHOCOLATE WITH ALMOND



71.8022 1000g/pc | 2pcs/box | 80 boxes/EU | 120boxes/USA



CAKE CHOCOLATE-STRAWBERRY



71.8036 1000g/pc | 2pcs/box | 80 boxes/EU | 120boxes/USA



CAKE BLACK FOREST



71.8042 1000g/pc | 2pcs/box | 80 boxes/EU | 120boxes/USA



CAKE EKMEK KATAIFI



71.8950 1100g/pc | 2pcs/box | 80 boxes/EU | 120boxes/USA



cake  
Ekmek kataifi





# CAKES

ALMOND CAKE



71.8339 900g/pc | 2pcs/box | 80 boxes/EU | 120boxes/USA



CAKE LILA PAUSE



71.8989 1000g/pc | 2pcs/box | 80 boxes/pal | 120boxes/USA



CAKE CHOCOLATE MOUSSE



71.8026 900g/pc | 2pcs/box | 80 boxes/EU | 120boxes/USA



CAKE MAGIC CHOCOLATE-HAZELNUT RECT.



71.8889 1000g/pc | 2pcs/box | 80 boxes/EU | 120boxes/USA



CAKE MAGIC CHOCOLATE-HAZELNUT ROUND



71.7601 1000g/pc | 2pcs/box | 80 boxes/EU | 120boxes/USA



CAKE MAGIC VANILLA ALMOND ROUND



71.7616 1000g/pc | 2pcs/box | 80 boxes/EU | 120boxes/USA



# CAKES

CAKE HEART BLACK FOREST



71.8276 800g/pc | 2pcs/box | 80 boxes/EU | 120boxes/USA



CAKE HEART CHOCOLATE



71.8275 850g/pc | 2pcs/box | 80 boxes/EU | 120boxes/USA



*cake*  
*Heart Black forest*



CAKE HEMISPHERE  
PRALINE-HAZELNUT

71.8389 1000g/pc | 2pcs/box | 64boxes/EU / 196boxes/USA



# CAKES DELUXE

CHEESE CAKE BLACK SOUR CHERRY



71.8021 900g/pc | 2pcs/box | 80 boxes/EU | 120boxes/USA



CAKE OREO COOKIES



71.8954 800g/pc | 2pcs/box | 80 boxes/EU | 120boxes/USA



CAKE CHOCOLATE ALMOND



71.8613 800g/pc | 2pcs/box | 80 boxes/EU | 120boxes/USA



CAKE PROFITEROL



71.8609 900g/pc | 2pcs/box | 80 boxes/EU | 120boxes/USA



CAKE BLACK FOREST



71.8955 750g/pc | 2pcs/box | 80 boxes/EU | 120boxes/USA



CAKE EKMEK KATAIFI



71.8611 800g/pc | 2pcs/box | 80boxes/pal EU / 120boxes/USA



*cake*  
**Black Forest**



# CAKES PRECUT 12 PIECES

**CAKE ESPRESSO**



71.7645 1400g/pc | 2pcs/box | 80 boxes/EU | 120boxes/USA  
 4-hours 12 MONTHS 4 Days

**CAKE LION**



71.7646 1400g/pc | 2pcs/box | 80 boxes/EU | 120boxes/USA  
 4-hours 12 MONTHS 4 Days

**CAKE FERRERO**



71.8566 1400g/pc | 2pcs/box | 80 boxes/EU | 120boxes/USA  
 4-hours 12 MONTHS 4 Days

**CAKE BUENO**



71.8586 1400g/pc | 2pcs/box | 80 boxes/EU | 120boxes/USA  
 4-hours 12 MONTHS 4 Days

**CAKE DUCHESS**



71.8595 2000g/pc | 2 pcs/box | 80 boxes/EU | 120 boxes/USA  
 4-hours 12 MONTHS 4 Days

**CAKE EKMEK KATAIFI**

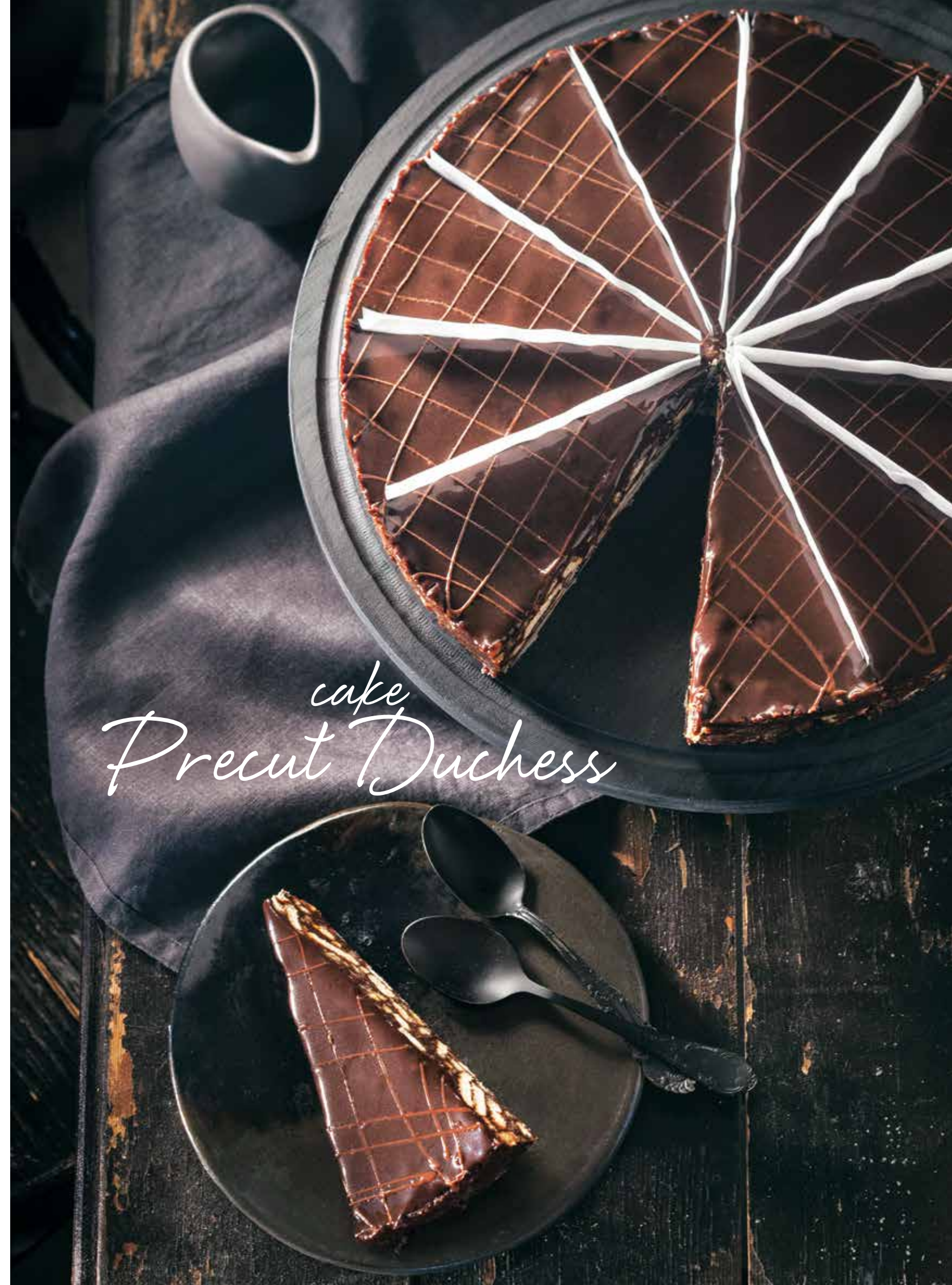


71.8585 1500g/pc | 2pcs/box | 80 boxes/EU | 120boxes/USA  
 4-hours 12 MONTHS 4 Days

**CHEESE CAKE WITH BLACK SOUR CHERRY**



71.8584 1900g/pc | 2pcs/box | 80 boxes/EU | 120boxes/USA  
 4-hours 12 MONTHS 4 Days



*cake  
Precut Duchess*

# WEDDING-CHRISTENING DESSERTS

## CAKE WEDDING-CHRISTENING

in various sizes  
(1kg, 2kg, 3kg, 4kg, 5kg) & various flavors  
(OREO COOKIES, CHOCOLATE, MIX,  
CHOCOLATE WITH STRAWBERRY, WHITE ALMOND)



71.8249 SIZE AND FLAVOUR UPON REQUEST



## BATON WEDDING-CHRISTENING 24PCS OR 48 PCS

- 71.8432 OREO COOKIES 2000g/pc | 2pcs/box | 96boxes/EU | 128boxes/USA
- 71.8433 MIX 2000g/pc | 2pcs/box | 96boxes/EU | 128boxes/USA
- 71.8434 CHOCOLATE STRAWBERRY 2000g/pc | 2pcs/box | 96boxes/EU | 128boxes/USA
- 71.8435 CHOCOLATE 2000g/pc | 2pcs/box | 96boxes/EU | 128boxes/USA

## INDIVIDUAL CAKE WEDDING-CHRISTENING



- 71.7560 OREO COOKIES 110g/pc | 12pcs/box | 120boxes/EU | 160boxes/USA
- 71.8444 MIX 110g/pc | 12pcs/box | 120boxes/EU | 160boxes/USA
- 71.7558 CHOCOLATE STRAWBERRY 110g/pc | 12pcs/box | 120boxes/EU | 160boxes/USA
- 71.7564 CHOCOLATE 110g/pc | 12pcs/box | 120boxes/EU | 160boxes/USA

## PYRAMID INDI. CAKE WEDDING-CHRISTENING ALMOND



- 71.7681 100g/pc | 12 pcs/box | 120boxes/ EU | 160boxes/USA

## BOWL WEDDING-CHRISTENING



- 71.8428 OREO COOKIES 80g/pc | 21 pcs/box | 120boxes/ EU | 160boxes/USA
- 71.8429 MIX 80g/pc | 21 pcs/box | 120boxes/ EU | 160boxes/USA
- 71.8430 CHOCOLATE STRAWBERRY 80g/pc | 21 pcs/box | 120boxes/ EU | 160boxes/USA
- 71.8431 CHOCOLATE 80g/pc | 21 pcs/box | 120boxes/ EU | 160boxes/USA



*Wedding cake*



# LOGS

## OREO COOKIES LOG



71.8619 750g/pc | 2pcs/box | 24boxes/ EU | 32boxes/USA



## CHOCOLATE STRAWBERRY LOG



71.8618 800g/pc | 2pcs/box | 24boxes/ EU | 32boxes/USA



## PROFITEROL LOG



71.8617 750g/pc | 2pcs/box | 24boxes/ EU | 32boxes/USA



## BISCUIT CHOCOLATE LOG

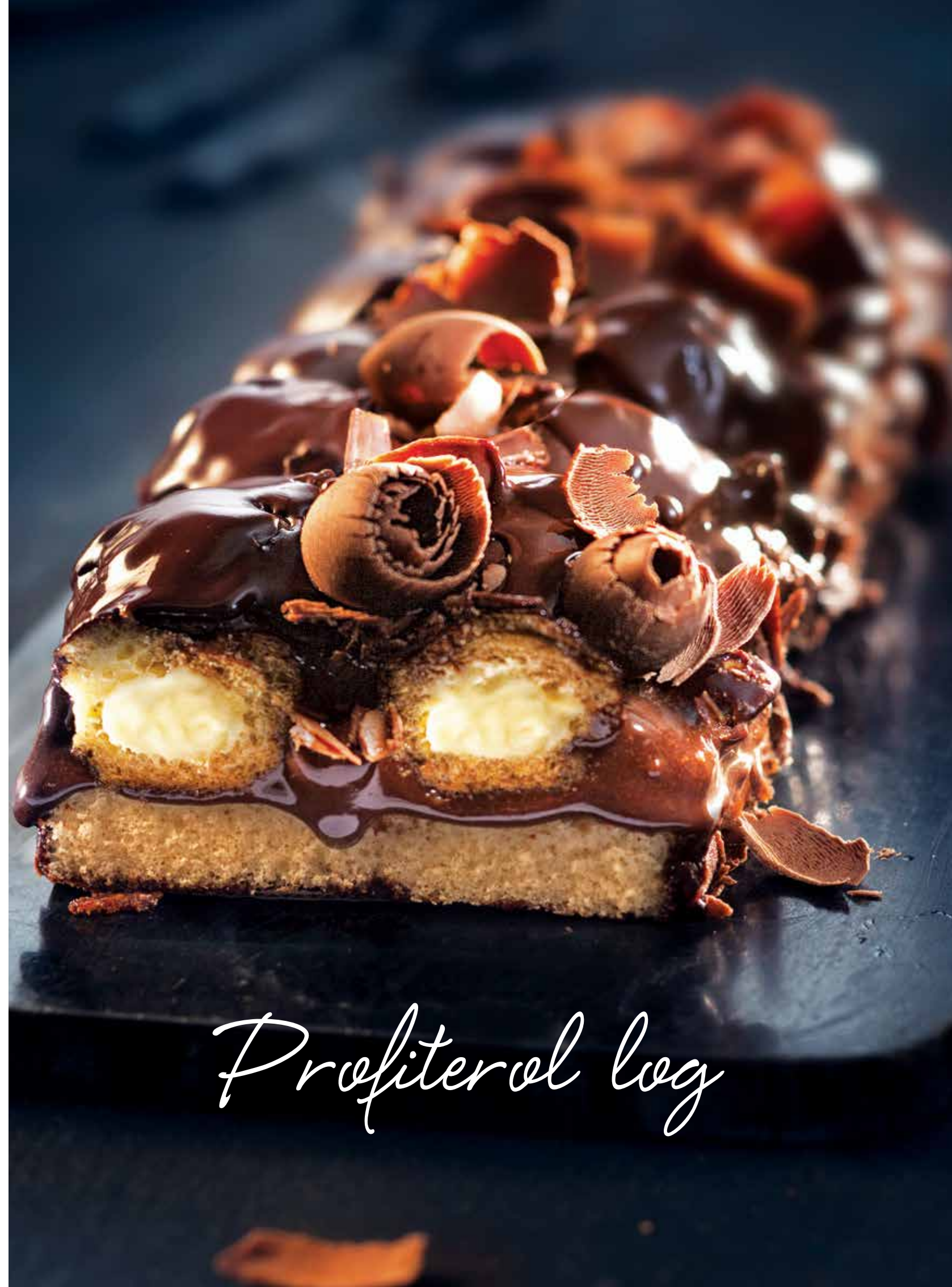


71.8061 1000g/pc | 2pcs/box | 24boxes/ EU | 32boxes/USA



## PROFITEROL FAMILY

71.8006 800g/pc | 2pcs/box | 80boxes/EU / 120boxes/USA



*Profiterol log*

# INDIVIDUAL CAKES

**CAKE FERRERO SPECIAL**



71.8170 PREMIUM 150g/pc | 11 pcs/box | 100boxes/ EU | 120boxes/USA



**CAKE OREO COOKIES**



71.8179 PREMIUM 150g/pc | 11 pcs/box | 100boxes/ EU | 120boxes/USA



**CAKE CHOCOLATE ALMOND**



71.8171 PREMIUM 140g/pc | 11 pcs/box | 100boxes/ EU | 120boxes/USA



**CAKE BUENO**



71.8188 PREMIUM 130g/pc | 11 pcs/box | 100boxes/ EU | 120boxes/USA



**CAKE LILA PAUSE PREMIUM**



71.8988 PREMIUM 140g/pc | 11 pcs/box | 100boxes/ EU | 120boxes/USA



**CAKE BISCOTTINO CHOCOLATE**



71.8234 PREMIUM 140g/pc | 11 pcs/box | 100boxes/ EU | 120boxes/USA



*cake  
Oreo Cookies*

# INDIVIDUAL CAKES

**CAKE CHOCOLATE-ORANGE**



71.8187 PREMIUM 140g/pc | 11 pcs/box | 100boxes/ EU | 120boxes/USA



**CAKE CHOCO-STRAWBERRY**



71.8180 PREMIUM 140g/pc | 11 pcs/box | 100boxes/ EU | 120boxes/USA



**CAKE MOUSSE CHOCOLATE**



71.8189 PREMIUM 140g/pc | 11 pcs/box | 100boxes/ EU | 120boxes/USA



**CAKE BLACK FOREST**



71.8168 PREMIUM 130g/pc | 11 pcs/box | 100boxes/ EU | 120boxes/USA



**CAKE CHOCOLATE-CARAMEL**



71.8181 PREMIUM 150g/pc | 11 pcs/box | 100boxes/ EU | 120boxes/USA



**CAKE ALMOND INDIVIDUAL**



71.8184 PREMIUM 130g/pc | 11 pcs/box | 100boxes/ EU | 120boxes/USA



# INDIVIDUAL CAKE HEART SHAPE

**CAKE HEART CHOCOLATE**



71.8186 PREMIUM 130g/pc | 11 pcs/box | 100boxes/ EU | 120boxes/USA



**CAKE HEART MIX**



71.8185 PREMIUM 110g/pc | 11 pcs/box | 100boxes/ EU | 120boxes/USA



**CAKE HEART CHOCOLATE - STRAWBERRY**



71.8248 PREMIUM 110g/pc | 11 pcs/box | 100boxes/ EU | 120boxes/USA



**CAKE HEART CHOCOLATE-CARAMEL**



71.8366 170g/pc | 12 pcs / box | 120 boxes /EU | 160boxes/USA



**CAKE HEART WHITE ALMOND**



71.8340 150g/pc | 12 pcs / box | 120 boxes /EU | 160boxes/USA





# INDIVIDUAL CAKE DREAM

CAKE ESPRESSO



71.7617 110g/pc | 12pcs/box | 120 boxes /EU | 160boxes/USA



CAKE MOCCA



71.7618 130g/pc | 12pcs/box | 120 boxes /EU | 160boxes/USA



CAKE KIT KAT



71.7619 130g/pc | 12pcs/box | 120 boxes /EU | 160boxes/USA



CAKE LION



71.7620 110g/pc | 12pcs/box | 120 boxes /EU | 160boxes/USA

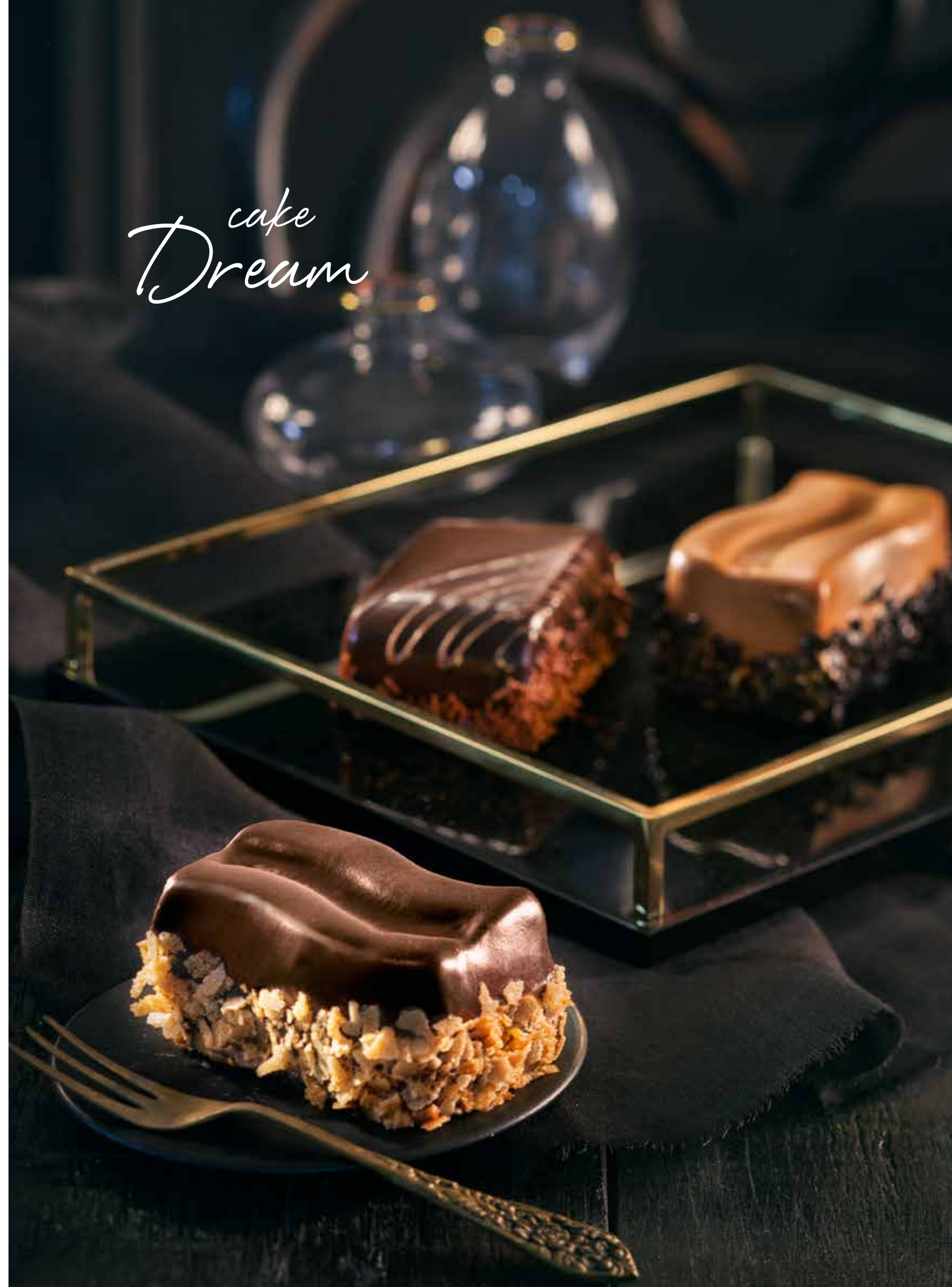


CAKE SALTED CARAMEL

71.7684 130g/pc | 12pcs/box | 120 boxes /EU | 160boxes/USA



*cake  
Dream*



# INDIVIDUAL CAKE PYRAMID

## FERRERO



71.7658 125g/pc | 12pcs/box | 120boxes/pal EU | 160boxes/USA



## OREO COOKIES



71.7659 125g/pc | 12pcs/box | 120boxes/pal EU | 160boxes/USA



## CHOCOLATE-STRAWBERRY



71.7660 125g/pc | 12pcs/box | 120boxes/pal EU | 160boxes/USA



## CHOCOLATE-ORANGE



71.7661 125g/pc | 12pcs/box | 120boxes/pal EU | 160boxes/USA



## SERANO WITH STRAWBERRY PIECES



71.7662 125g/pc | 12pcs/box | 120boxes/pal EU | 160boxes/USA



# INDIVIDUAL CAKE PYRAMID LOW SUGAR

## WHITE LOW SUGAR



71.7663 125g/pc | 12pcs/box | 120boxes/pal EU | 160boxes/USA



## BITTER LOW SUGAR



71.7664 125g/pc | 12pcs/box | 120boxes/pal EU | 160boxes/USA



# INDIVIDUAL CAKE DELUXE

## CHEESE CAKE BLACK SOUR CHERRY



71.8169 PREMIUM 140g/pc | 12 pcs/box | 120boxes/ EU | 160boxes/USA

71.8082 EXTRA 170g/pc | 12 pcs/box | 120boxes/ EU | 160boxes/USA



## CAKE FERRERO



71.8473 120g/pc | 12 pcs/box | 120boxes/ EU | 160boxes/USA



## CAKE OREO COOKIES



71.8474 120g/pc | 12 pcs/box | 120boxes/ EU | 160boxes/USA



## CAKE TIRAMISU



71.8191 130g/pc | 12 pcs/box | 120boxes/ EU | 160boxes/USA

71.8087 EXTRA 150g/pc | 12 pcs/box | 120boxes/ EU | 160boxes/USA



## CAKE CHOCOLATE-CARAMEL



71.8479 120g/pc | 12 pcs/box | 120boxes/ EU | 160boxes/USA



## CAKE CHOCOLATE-STRAWBERRY



71.8481 130g/pc | 12 pcs/box | 120boxes/ EU | 160boxes/USA



cake  
Ekmek kataifi



# INDIVIDUAL CAKE DELUXE

## CAKE CHOCOLATE MOUSSE



71.8478 120g/pc | 12 pcs/box | 120boxes/ EU | 160boxes/USA



## CAKE BLACK FOREST



71.8956 120g/pc | 12 pcs/box | 120boxes/ EU | 160boxes/USA



## CAKE EKMEK KATAIFI



71.8079 EXTRA 190g/pc | 12 pcs/box | 120boxes/ EU | 160boxes/USA

71.8735 150g/pc | 12 pcs/box | 120boxes/ EU | 160boxes/USA



## CAKE ALMOND



71.8482 120g/pc | 12 pcs/box | 120boxes/ EU | 160boxes/USA



## MILLE-FEUILLE CAKE



71.8865 EXTRA 190g/pc | 12 pcs/box | 120boxes/ EU | 160boxes/USA



## CAKE BANOFFEE



71.8909 EXTRA 180g/pc | 12 pcs/box | 120boxes/ EU | 160boxes/USA



*cake*  
Mille-feuille



# SPECIAL SWEETS

**CAKE HEMISPHERE FERRERO**  
(HAZELNUT PRALINE)



71.8390 150g/pc | 12 pcs/box | 120boxes/ EU | 160boxes/USA



**CAKE HEMISPHERE LEMON**



71.8626 110g/pc | 12 pcs/box | 120boxes/ EU | 160boxes/USA



**CAKE CHOCOLATE DELIGHT**



71.8752 180g/pc | 12 pcs/box | 120boxes/ EU | 160boxes/USA



**CAKE MOUSE**



71.8120 180g/pc | 12 pcs/box | 120boxes/ EU | 160boxes/USA



**CAKE MIXED TRIANGLE**



71.8183 130g/pc | 12 pcs/box | 120boxes/ EU | 160boxes/USA



**CAKE CHOCOLATE TRIANGLE**



71.8182 130g/pc | 12 pcs/box | 120boxes/ EU | 160boxes/USA



**CAKE SERANO**



71.8414 150g/pc | 12 pcs/box | 120boxes/ EU | 160boxes/USA



**CAKE MAGIC CHOCOLATE HAZELNUT**



71.8886 150g/pc | 12 pcs/box | 120boxes/ EU | 160boxes/USA



**CAKE MAGIC VANILLA ALMOND**



71.8885 170g/pc | 12 pcs/box | 120boxes/ EU | 160boxes/USA



**CAKE OVAL CARAMEL**



71.8395 170g/pc | 12 pcs/box | 120boxes/ EU | 160boxes/USA



**NEW YORK CHEESE CAKE LEMON**



71.8452 190g/pc | 12 pcs/box | 120boxes/ EU | 160boxes/USA



**NEW YORK CHEESE CAKE APPLE-CARAMEL**



71.8453 190g/pc | 12 pcs/box | 120boxes/ EU | 160boxes/USA



**CREME BROULEE**



71.8321 145g/pc | 12 pcs/box | 64boxes/ EU | 96boxes/USA

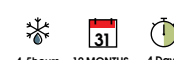


# LOW SUGAR

**CAKE HEMISPHERE PRALINE**



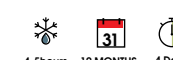
71.8627 140g/pc | 12 pcs/box | 120boxes/ EU | 160boxes/USA



**CAKE HEMISPHERE WHITE CHOCOLATE**



71.8419 150g/pc | 12 pcs/box | 120boxes/ EU | 160boxes/USA



# BATON

**CHOCOLATE PRALINE WITH HAZELNUT 48PCS**



71.8242 1800g/pc | 2 pcs/box | 96boxes/ EU | 128boxes/USA

**BATON OREO COOKIE 48 PCS.**



71.8153 1800g/pc | 2 pcs/box | 96boxes/ EU | 128boxes/USA

**BATON MIXED 48 PCS.**



71.8011 1800g/pc | 2 pcs/box | 96boxes/ EU | 128boxes/USA

**BATON EKMEK KATAIFI 48 PCS.**



71.8009 1800g/pc | 2 pcs/box | 96boxes/ EU | 128boxes/USA

**BATON CHAMPAGNE-HONEY 48 PCS.**



71.8004 1800g/pc | 2 pcs/box | 96boxes/ EU | 128boxes/USA

**BATON KATAIFI-RAVANI 48 PCS.**



71.8579 2400g/pc | 2 pcs/box | 96boxes/ EU | 128boxes/USA



*baton*  
*Champagne-honey*



# BATON HOTELLING

**BATON CHOCOLATE 48 PCS.**



71.8809 1500g/pc | 2 pcs/box | 96boxes/ EU | 128boxes/USA

**BATON CHOCOLATE STRAWBERRY 48 PCS.**



71.8810 1500g/pc | 2 pcs/box | 96boxes/ EU | 128boxes/USA



**BATON OREO COOKIES 48 PCS.**

71.8811 1500g/pc | 2 pcs/box | 96boxes/ EU | 128boxes/USA

**BATON MIX 48 PCS.**



71.8812 1500g/pc | 2 pcs/box | 96boxes/ EU | 128boxes/USA

**BATON WALNUT PIE 48 PCS.**



71.8822 2000g/pc | 2 pcs/box | 96boxes/ EU | 128boxes/USA



*Baton walnut pie*

# DAILY SWEETS - INDIVIDUAL

## COKE CREAM FILLED PASTRY



71.8707 mat 150g/pc 18pcs/box | 72boxes/ EU | 96boxes/USA



## COKE DRY CREAM FILLED PASTRY



71.7510 mat 150g/pc 18pcs/box | 72boxes/ EU | 96boxes/USA



## ECLAIR

71.8373 mirror 90g/pc | 30pcs/box | 72boxes/ EU | 96boxes/USA



## CREAM HORNE



71.8379 250g/pc | 8 pcs/box | 120boxes/ EU | 160boxes/USA



## RUM SAVARIN



71.8377 240g/pc | 12 pcs/box | 120boxes/ EU | 160boxes/USA





# DAILY SWEETS - MINI

## COKE FLAVORS MIX 72PCS (STRAWBERRY-ORANGE-BANANA-WHITE CHOCOLATE)



71.8854 30g/pc | 2.1kg/box / 72boxes/EU / 96boxes/USA



### COKE



71.8260 30g (mat) 72pcs. 2,2kg/box | 72boxes/ EU | 96boxes/USA

### COKE DRY



71.7511 35g (mat) 60pcs. 2,1kg/box | 72boxes/ EU | 96boxes/USA



## EKLER FLAVORS MIX 72PCS (STRAWBERRY-ORANGE-BANANA-WHITE CHOCOLATE)



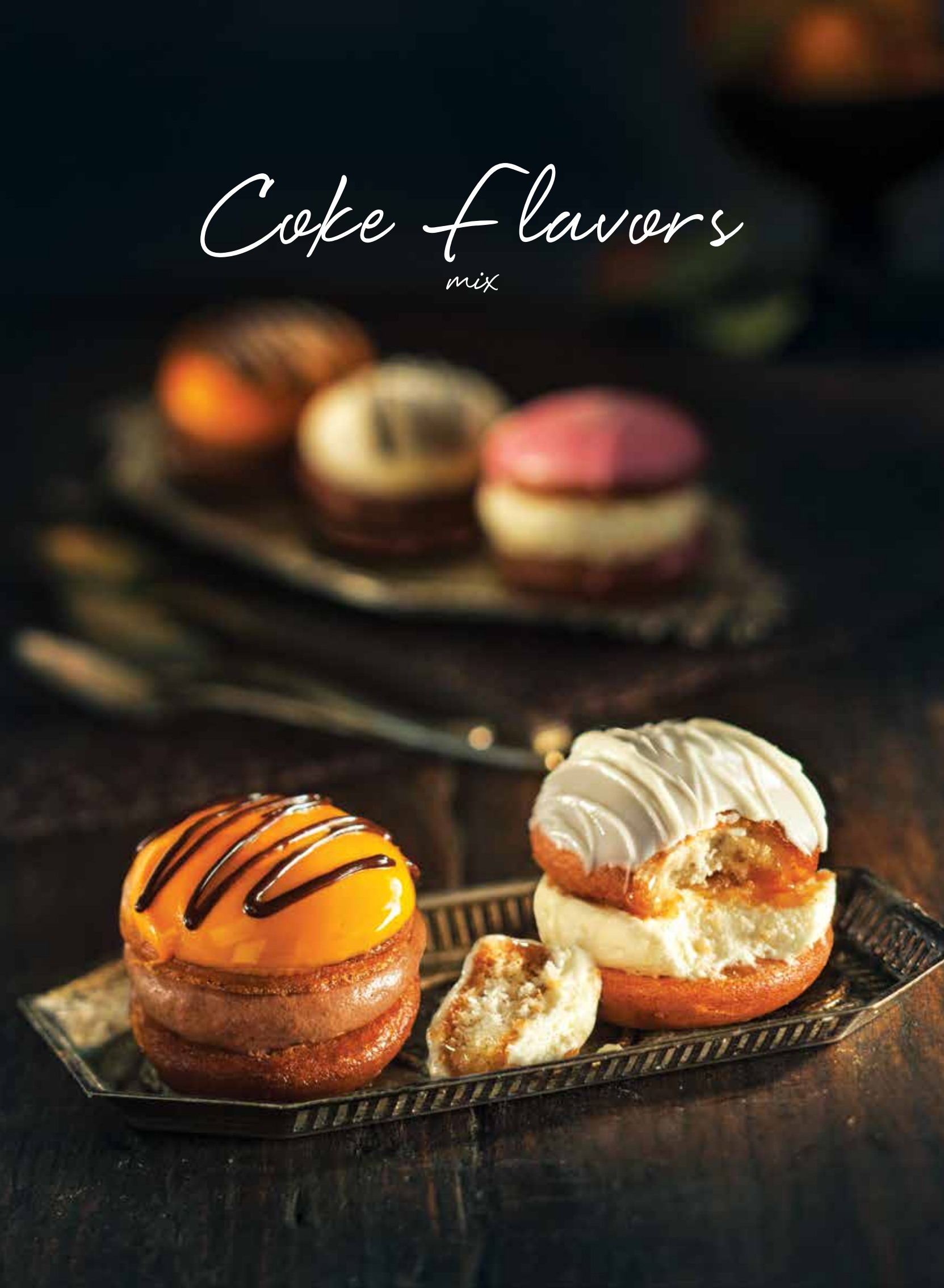
71.8853 35g/pc | 2.7kg/box / 72boxes/EU / 96boxes/USA



### ECLAIR 72PCS



71.8711 35g/pc | 2.5kg/box | 72boxes/ EU | 96boxes/USA



# DAILY SWEETS - MINI

**MINI CREAM HORN 65G, 60PCS**



71.8380 65g/pc | 4,6kg/box | 72boxes/EU / 96/boxes/USA



**BEIRUT PHYLLO TRIANGULAR WITH CREAM**



71.8382 55g/pc | 3kg/box | 51-55 pcs/boxes / 72boxes/EU / 96/boxes/USA



**MINI CHOCO CRUNCH CARAMEL LOG-PYRAMID**



71.8375 35g/pc | 2,5kg/box | 68-73 pcs/boxes | 120boxes/EU / 160/boxes/USA



**MINI RUM SAVARIN 75G, 40PCS**



71.8378 75g/pc | 3kg/box | 72boxes/ EU | 96boxes/USA



**CHOUX CREAM FILLED  
WITH CARAMEL COATING 30G, 48PCS**



71.8580 30g/pc | 1.55kg/box | 72boxes/ EU | 96boxes/USA



*Coke*  
individual



# PASTRY BOWLS DELUXE WITH COVER



Espresso

Mocca

Kit Kat



EkmeK kataifi

Profiterol

Ferrero

Oreo cookies

Salted caramel



Lion

Lila Pause



Cheese Cake

Chocolate Mousse

Tiramisu

Banoffee

- 71.7625 **BOWL ESPRESSO**  
130g/pc | 18pcs/box | 120boxes/ EU | 160boxes/USA
- 71.7626 **BOWL MOCCA**  
130g/pc | 18pcs/box | 120boxes/ EU | 160boxes/USA
- 71.7627 **BOWL KIT KAT**  
130g/pc | 18pcs/box | 120boxes/ EU | 160boxes/USA
- 71.7628 **BOWL LION**  
130g/pc | 18pcs/box | 120boxes/ EU | 160boxes/USA
- 71.7629 **BOWL LILA PAUSE**  
130g/pc | 18pcs/box | 120boxes/ EU | 160boxes/USA

- 71.8766 **BOWL DELUXE FLAVORS MIX 1, 18 PCS**  
(4 FERRERO, 4 PROFITEROL, 4 EKMEK KATAIFI, 3 OREO COOKIES, 3 MILLEFEUILLE)  
130g/pc | 18pcs/box | 120boxes/ EU | 160boxes/USA
- 71.7630 **BOWL DELUXE FLAVORS MIX 2 . 18 PCS**  
(4 ESPRESSO, 4 KIT KAT, 4 LION, 3 LILA PAUSE, 3 MOCCA,)  
130g/pc | 18pcs/box | 120boxes/ EU | 160boxes/USA



- 71.8758 **BOWL EKMEK KATAIFI**  
130g/pc | 18pcs/box | 120boxes/ EU | 160boxes/USA
- 71.8622 **BOWL PROFITEROL**  
120g/pc | 18pcs/box | 120boxes/ EU | 160boxes/USA
- 71.8602 **BOWL FERRERO**  
130g/pc | 18pcs/box | 120boxes/ EU | 160boxes/USA

- 71.8603 **BOWL OREO COOKIES**  
130g/pc | 18pcs/box | 120boxes/ EU | 160boxes/USA
- 71.7686 **BOWL SALTED CARAMEL**  
130g/pc | 18pcs/box | 120boxes/ EU | 160boxes/USA



- 71.8604 **BOWL CHEESE CAKE BLACK SOUR CHERRY**  
130g/pc | 18pcs/box | 120boxes/ EU | 160boxes/USA
- 71.8598 **BOWL CHOCOLATE MOUSSE**  
130g/pc | 18pcs/box | 120boxes/ EU | 160boxes/USA



- 71.8077 **BOWL TIRAMISU**  
110g/pc | 18pcs/box | 120boxes/ EU | 160boxes/USA
- 71.8940 **BOWL BANOFFEE**  
130g/pc | 18pcs/box | 120boxes/ EU | 160boxes/USA



# CANNED BOWL WITH COVER

**BOWL CANNED FERRERO**



71.7678 80g/pc | 25pcs/box | 132boxes/ EU | 176boxes/USA



**BOWL CANNED OREO COOKIES**



71.7679 80g/pc | 25pcs/box | 132boxes/ EU | 176boxes/USA



**BOWL CANNED PROFITEROL**



71.7680 80g/pc | 25pcs/box | 132boxes/ EU | 176boxes/USA



**BOWL CANNED CHOCOLATE -STRAWBERRY**



71.7677 80g/pc | 25pcs/box | 132boxes/ EU | 176boxes/USA

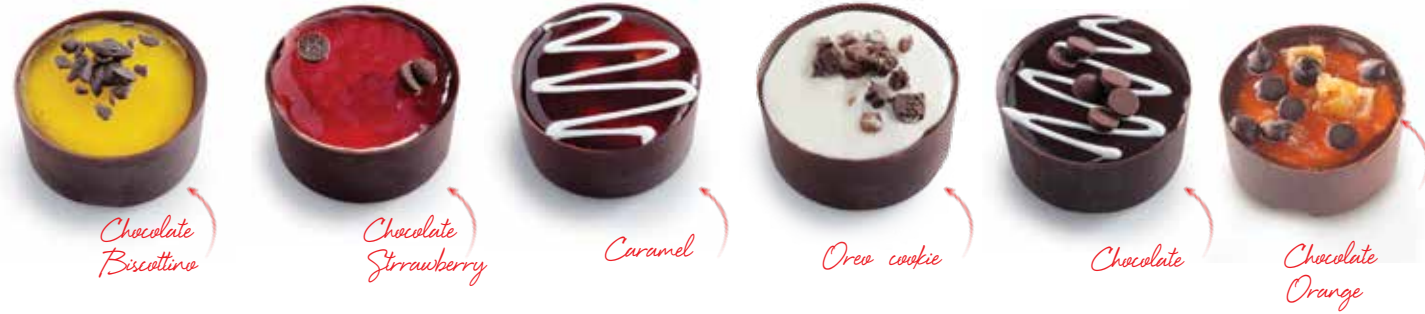


71.7676 **BOWL CANNED FLAVORS MIX**  
(7 OREO COOKIES, 7 FERRERO, 6 PROFITEROL, 5 CHOCOLATE-STRAWBERRY)  
80g/pc | 25pcs/box | 132boxes/ EU | 176boxes/USA



# BUFFET SWEETS MINI

## CAKE MINI FLAVORS MIX 1 (5PCS PER FLAVOR) (BISCOTTINO-STRAWBERRY-CARAMEL-OREO-CHOCOLATE-ORANGE)



71.8078 30g/pc | 30pcs/box / 132boxes/EU/ 176boxes/USA



## TRUFFLES MIX FLAVOURS (CACAO, PISTACHIO, CARAMELIZED PEANUT, TRUFFLE MILK, BITTER)



71.8532 20g/pc | 3kg/box | 120boxes/ EU | 160boxes/USA



# Cake mini Flavors



# BUFFET SWEETS MINI

## SWEET SHOTS HEXAGONAL FLAVORS MIX (6PCS PER FLAVOR) (COOKIES,CHEESE CAKE,MOUSSE, BISCOTTINO, CHOC-STRAWBERRY)

71.8272 45g/pc | 30pcs/box | 132boxes/ EU | 176boxes/USA



## SWEET SHOTS ROUND FLAVORS MIX (6PCS PER FLAVOR) (PROFITEROL ,AMARENA,BISCOTTINO-CHOCOLATE,FERRERO,BUENO)

71.8273 45g/pc | 30pcs/box | 132boxes/ EU | 176boxes/USA



## SWEET SHOTS TUBE FLAVORS MIX (6PCS PER FLAVOR) ESPRESSO, MOCCA, KIT KAT, LION, LILA PAUSE

71.7631 45g/pc | 30pcs/box | 132boxes/ EU | 176boxes/USA



# BUFFET SWEETS

## CHOCOLATE PIE 12 PCS



71.8065 12 Pcs 1900g/pc | 1pc/box | 186boxes/ EU | 248boxes/USA



## ORANGE PIE



71.8423 12 Pcs 2500g/pc | 1pc/box | 186boxes/ EU | 248boxes/USA  
71.8933 20 Pcs 2500g/pc | 1pc/box | 186boxes/ EU | 248boxes/USA



## WALNUT PIE



71.8057 12 Pcs 2700g/pc | 1pc/box | 186boxes/ EU | 248boxes/USA  
71.8934 20 Pcs 2700g/pc | 1pc/box | 186boxes/ EU | 248boxes/USA



## WALNUT PIE MAGIC



71.8871 12 Pcs 2700g/pc | 1pc/box | 186boxes/ EU | 248boxes/USA  
71.8958 20 Pcs 2700g/pc | 1pc/box | 186boxes/ EU | 248boxes/USA



## RAVANI CAKE



71.7682 12 Pcs 2200g/pc | 1pc/box | 186boxes/ EU | 248boxes/USA  
71.7683 20 Pcs 2200g/pc | 1pc/box | 186boxes/ EU | 248boxes/USA



## AMERICAN BROWNIE SPECIAL 12 PCS



71.8089 1700g/pc | 1pc/box | 186boxes/ EU | 248boxes/USA



# Buffet Sweets

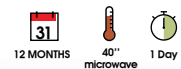


# BUFFET SWEETS

## SOUFFLE



71.8064 CHOCOLATE SPECIAL 155g/pc | 16pcs/box | 132boxes/ EU | 176boxes/USA  
 71.8858 ORANGE 130g/pc | 16pcs/box | 132boxes/ EU | 176boxes/USA



## WALNUT CHOCOLATE NEST



71.8080 150g/pc | 12pcs/box | 120boxes/ EU | 160boxes/USA



## MINI CHOCO BROWNIE PRECUT 260 PCS

71.8096 1800g/pc | 260pcs/box | 186boxes/ EU | 248boxes/USA



## CAKE BLONDIE MHAO ALL DAY 42 PCS



71.8287 1600g/pc | 2pcs/box | 186boxes/ EU | 248boxes/USA



## CAKE BLONDIE CHEESE CRANBERRY ALL DAY 42 PCS



71.8289 1500g/pc | 2pcs/box | 186boxes/ EU | 248boxes/USA





# FAMILY TARTS

## DOUBLE CRUST APPLE PIE 12PCS



71.7605 1800g/pc | 2pcs/box | 80 boxes/pal EU | 120boxes/USA



## APPLE PIE WITH FRESH APPLES



71.7674 12 PIECES 2000g/pc | 2pcs/box | 132boxes/ EU | 176boxes/USA

71.8100 10 PIECES 2000g/pc | 2pcs/box | 132boxes/ EU | 176boxes/USA

71.8101 8 PIECES 1000g/pc | 2pcs/box | 80 boxes/pal EU | 120boxes/USA



## APPLE PIE CRUMBLE



71.7675 12 PIECES 2000g/pc | 2pcs/box | 132boxes/ EU | 176boxes/USA

71.8102 10 PIECES 2000g/pc | 2pcs/box | 132boxes/ EU | 176boxes/USA

71.8099 8 PIECES 1100g/pc | 2pcs/box | 80 boxes/pal EU | 120boxes/USA



## APPLE PIE PREMIUM 8PCS



71.8334 1000g/pc | 2pcs/box | 80 boxes/pal EU | 120boxes/USA



## ESPRESSO TART 8PCS



71.7632 900g/pc | 2pcs/box | 80 boxes/EU | 120boxes/USA



## LION TART 8PCS



71.7633 900g/pc | 2pcs/box | 80 boxes/EU | 120boxes/USA



*Double crust  
apple pie*

# FAMILY TARTS



## CHOCOLATE TART 8PCS

71.8896 900 g/pc | 2pcs/box | 80 boxes/pal EU | 120boxes/USA



## TART BANOFFEE 8PCS

71.8941 1000 g/pc | 2pcs/box | 80 boxes/pal EU | 120boxes/USA



*Espresso Tart*

# INDIVIDUAL TARTS

ESPRESSO TART



71.7634 120g/pc | 12pcs/box | 120boxes/EU | 160boxes/USA



MOCCA TART



71.7635 120g/pc | 12pcs/box | 120boxes/EU | 160boxes/USA



MILK CHOCOLATE TART



71.8715 130g/pc | 12pcs/box | 120boxes/EU | 160boxes/USA



APPLE TART CRUMBLE



71.8092 150g/pc | 12pcs/box | 120boxes/EU | 160boxes/USA



LION TART



71.7636 120g/pc | 12pcs/box | 120boxes/EU | 160boxes/USA



KIT KAT TART



71.7637 120g/pc | 12pcs/box | 120boxes/EU | 160boxes/USA



LEMON PIE TART



71.8068 140g/pc | 12pcs/box | 120boxes/EU | 160boxes/USA



BANOFFEE CARAMEL TART



71.8714 140g/pc | 12pcs/box | 120boxes/EU | 160boxes/USA



# AMERICAN SWEETS

**AMERICAN DREAM CAKE SPECIAL**  
14 PCS. PRECUT



71.8483 2700g/pc | 1pc/box | 96boxes/EU | 128boxes/USA



**CARROT CAKE PRECUT**



71.8905 8 PCS 2000g/pc | 1pc/box | 128boxes/EU | 192boxes/USA

71.8411 14 PCS 2900g/pc | 1pc/box | 96boxes/EU | 128boxes/USA



**RED VELVET CAKE PRECUT**



71.8903 8 PCS 2000g/pc | 1pc/box | 128boxes/EU | 192boxes/USA

71.8427 14 PCS 2900g/pc | 1pc/box | 96boxes/EU | 128boxes/USA



*Carrot  
cake*

## CAKE HOTELLING 600g



*Vanilla  
choc chips*

71.8817 **VANILLA CAKE WITH CHOC CHOC CHIPS**  
600g/pc | 8pcs/box | 64boxes/EU | 96boxes/USA

71.8818 **CHOCOLATE CAKE CHOCO CHIPS**  
600g/pc | 8pcs/box | 64boxes/EU | 96boxes/USA



*Chocolate  
choc chips*

71.8816 **MIXED CAKE (VANILLA-CHOCOLATE)**  
600g/pc | 8pcs/box | 64boxes/EU | 96boxes/USA



4-hours 12 MONTHS 5 Days

*Mix*

## ROUND CAKES



### CAKE VANILLA COVERED WITH CHOCOLATE

71.8491 1000g/pc | 2pcs/box | 80 boxes/EU | 120boxes/USA



4-hours 12 MONTHS 5 Days

### CAKE MIXED COVERED WITH CHOCOLATE

71.8490 1000g/pc | 2pcs/box | 80 boxes/EU | 120boxes/USA



4-hours 12 MONTHS 5 Days



*Vanilla Cake*  
*with white chocolate coating*

# MUFFIN CLASSIC

MUFFIN VANILLA-CHOC CHIPS



71.8192 100g/pc | 20 pcs/box | 120boxes/ EU | 160boxes/USA

MUFFIN CHOCOLATE-CHOC CHIPS



71.8193 100g/pc | 20 pcs/box | 120boxes/ EU | 160boxes/USA

MUFFIN RED VELVET



71.7656 100g/pc | 20 pcs/box | 120boxes/ EU | 160boxes/USA



# MUFFIN WITH FILLING



71.8299 CHOCOLATE MUFFIN WITH PRALINE  
110g/pc | 20 pcs/box | 120boxes/ EU | 160boxes/USA

71.8298 MUFFIN WITH BUTTER CARAMEL  
110g/pc | 20 pcs/box | 120boxes/ EU | 160boxes/USA

71.7655 MUFFIN RED VELVET VANILLA CREAM  
110g/pc | 20 pcs/box | 120boxes/ EU | 160boxes/USA

71.8297 MUFFIN WITH APPLE-CINNAMON  
110g/pc | 20 pcs/box | 120boxes/ EU | 160boxes/USA



# WAFFLES

WAFFLES LIEGE



87.6424 90g/pc | 30pcs/box | 136boxes/EU | 176boxes/USA



WAFFLES LIEGE



87.6422 35g/pc | 64pcs/box | 136boxes/EU | 176boxes/USA



# GREEK SWEET BREAD

**TSOUREKI FILLING PRALINE-CHOCOLATE TOPPING**



71.8251 550g/pc | 8pcs/box | 24boxes/EU | 40boxes/USA



**TSOUREKI FILLING PRALINE-CHOCOLATE TOPPING (retail)**



71.8971 550g/pc | 8pcs/box | 24boxes/EU | 40boxes/USA

**TSOUREKI FILLING BISCUIT PRALINE-WHITE TOPPING**



71.8253 550g/pc | 8pcs/box | 24boxes/EU | 40boxes/USA



**TSOUREKI FILLING BISCUIT PRALINE-WHITE TOPPING (retail)**



71.8973 550g/pc | 8pcs/box | 24boxes/EU | 40boxes/USA



**TSOUREKI POLITIKO**

71.8656 500g/pc | 4pcs/box | 64boxes/EU | 96boxes/USA



*Sweet Bread*  
with praline

# AMERICAN COOKIES

## AMERICAN CHOCOLATE COOKIES DOUBLE CHOCOLATE



71.8678 60g/pc | 52 pcs/box | 120boxes/ EU | 160boxes/USA



## AMERICAN VANILLA COOKIES MILK CHOCOLATE



71.8679 60g/pc | 52 pcs/box | 120boxes/ EU | 160boxes/USA



## OATMEAL AMERICAN COOKIES



71.8680 60g/pc | 52 pcs/box | 120boxes/ EU | 160boxes/USA



*American Cookies*





# CEREAL BAR SUPERFOOD

## CEREAL BAR SUPERFOOD

(with oats, chocolate, cranberries, flaxseed, sunflower seeds, almond, peanut)



71.8747 50g/pc | 78pcs/box | 186boxes/ EU | 248boxes/USA



## CEREAL BAR SUPERFOOD WITH CHOCOLATE

(cocoa, oats, chocolate, cranberries, flaxseed, sunflower seeds, almond, peanut)



71.8748 50g/pc | 78pcs/box | 186boxes/ EU | 248boxes/USA



## CEREAL BAR SUPERFOOD COCONUT

(coconut, white chocolate, cranberry raisin, pistachio)



71.8723 50g/pc | 78pcs/box | 186boxes/ EU | 248boxes/USA



## CEREAL BAR SUPERFOOD YOGURT-CRANBERRY-WHITE CHOCOLATE

(yogurt, cranberries, white chocolate, oats, goji berries)



71.8716 50g/pc | 78pcs/box | 186boxes/ EU | 248boxes/USA



## CEREAL BAR SUPERFOOD WITH CHOCOLATE TAHINI & HONEY

(chocolate, tahini, honey, oats, cranberries, flaxseed, sunflower seeds, almond, peanut)



71.8952 50g/pc | 78pcs/box | 186boxes/ EU | 248boxes/USA



## CEREAL BAR SUPERFOOD STRAWBERRY-CHOCOLATE-PISTACHIO

(strawberry chocolate, pistachio, cranberry, raisin, hazelnut, almond)



71.7644 50g/pc | 78pcs/box | 186boxes/ EU | 248boxes/USA



Store after thawing at room temperature (<22 ° C) for 3-4 days



# CEREAL BAR SUPERFOOD

## CEREAL BAR SUPERFOOD HAZELNUT-WHITE CHOCOLATE

(hazelnut, white chocolate, raisin, cranberry, pistachio, sesame)



71.7642 50g/pc | 78pcs/box | 186boxes/ EU | 248boxes/USA



## CEREAL BAR SUPERFOOD PISTACHIO-CRANBERRY

(pistachio, cranberry, white chocolate, raisin, almond)



71.7643 50g/pc | 78pcs/box | 186boxes/ EU | 248boxes/USA



## CEREAL BAR SQUARE STRAWBERRY-CHOCOLATE-PISTACHIO

(chocolate strawberry, pistachio, cranberry, raisin, hazelnut, almond)



71.7606 65g/pc | 48pcs/box | 186boxes/ EU | 248boxes/USA



## CEREAL BAR SQUARE COCONUT-CRANBERRY

(coconut, white chocolate, cranberry raisin, pistachio)



71.7607 65g/pc | 48pcs/box | 186boxes/ EU | 248boxes/USA



## CEREAL BAR SQUARE HAZELNUT-WHITE CHOCOLATE

(hazelnut, white chocolate, raisin, cranberry, pistachio, sesame)



71.7608 65g/pc | 48pcs/box | 186boxes/ EU | 248boxes/USA



## CEREAL BAR SQUARE YOGURT-CRANBERRY-WHITE CHOCOLATE

(yogurt, cranberries, white chocolate, oats, goji berries)



71.7615 65g/pc | 48pcs/box | 186boxes/ EU | 248boxes/USA



Store after thawing at room temperature (<22 ° C) for 3-4 days

Square  
Cereal Bar



# CEREAL BAR SUPERFOOD WITH CHOCOLATE COATING

## CEREAL BAR SUPERFOOD PISTACHIO-CRANBERPY CHOCHOLATE COATING

(pistachio, cranberries, white chocolate, raisins, almonds and chocolate coating)



71.7609 55g/pc | 78pcs/box | 186boxes/ EU | 248boxes/USA



## CEREAL BAR SUPERFOOD HAZELNUT CHOCO COATING

(hazelnut, white chocolate, raisin, cranberry, pistachio, sesame and chocolate coating)



71.7610 55g/pc | 78pcs/box | 186boxes/ EU | 248boxes/USA



## CEREAL BAR SUPERFOOD STRAWB-PISTACH CHOCO COATING

(chocolate strawberry, pistachio, cranberry, raisin, hazelnut, almond and chocolate coating)



71.7611 55g/pc | 78pcs/box | 186boxes/ EU | 248boxes/USA



## CEREAL BAR SUPERFOOD STRAWB-PISTACH CHOCO COATING SQUARE

(chocolate strawberry, pistachio, cranberry, raisin, hazelnut, almond and chocolate coating)



71.7614 70g/pc | 48pcs/box | 186boxes/ EU | 248boxes/USA



## CEREAL BAR SUPERFOOD HAZELNUT CHOCO COATING SQUARE

(hazelnut, white chocolate, raisin, cranberry, pistachio, sesame and chocolate coating)



71.7613 70g/pc | 48pcs/box | 186boxes/ EU | 248boxes/USA



## CEREAL BAR SUPERFOOD PISTACHIO-CRANBERPY CHOCHOLATE COATING SQUARE

(pistachio, cranberry, white chocolate, raisin, almond and chocolate coating)



71.7612 70g/pc | 48pcs/box | 186boxes/ EU | 248boxes/USA



Store after thawing at room temperature (<22 ° C) for 3-4 days

# ENERGY BARS PEANUTBUTTER

## ENERGY BAR PEANUTBUTTER-HAZELNUT-ALMOND SQUARE

(peanut butter, hazelnut, almond, honey)



71.7688 65g/pc | 48pcs/box | 186boxes/ EU | 248boxes/USA



## ENERGY BAR PEANUTBUTTER-ALMOND SQUARE

(peanut butter, pistachio, hazelnut, honey)



71.7689 65g/pc | 48pcs/box | 186boxes/ EU | 248boxes/USA



## ENERGY BAR PEANUTBUTTER-CRANBERRY SQUARE

(peanut butter, cranberry, almond, hazelnut, honey)

71.7690 65g/pc | 48pcs/box | 186boxes/ EU | 248boxes/USA



Store after thawing at room temperature (<22 ° C) for 3-4 days

# SYRUPED PASTRIES

## BAKLAVAS



- 71.8197 BAKLAVAS BAKED 12 pcs  
2000g/pc | 2pcs/box | 96boxes/ EU | 128boxes/USA
- 71.8725 BAKLAVAS BAKED 16 pcs  
2900g/pc, 1pc/box, 186boxes/ EU, 248boxes/USA
- 71.8458 BAKLAVAS BAKED 24 pcs  
2900g/pc, 1pc/box, 186boxes/ EU, 248boxes/USA



## GALAKTOBOUREKO



- 71.8997 GALAKTOBOUREKO 10 pcs BAKED  
2000g/pc | 2 pcs/box | 96boxes/ EU | 128boxes/USA
- 71.8246 GALAKTOBOUREKO 10 pcs UNBAKED WITH SYRUP  
2000g/pc | 2 pcs/box | 96boxes/ EU | 128boxes/USA
- 71.8998 GALAKTOBOUREKO 18pcs BAKED  
3500g/pc | 1 pc/box | 120boxes/ EU | 160boxes/USA
- 71.8263 GALAKTOBOUREKO 18 pcs UNBAKED WITH SYRUP  
3500g/pc | 1 pc/box | 120boxes/ EU | 160boxes/USA



## GALAKTOBOUREKO ROLL



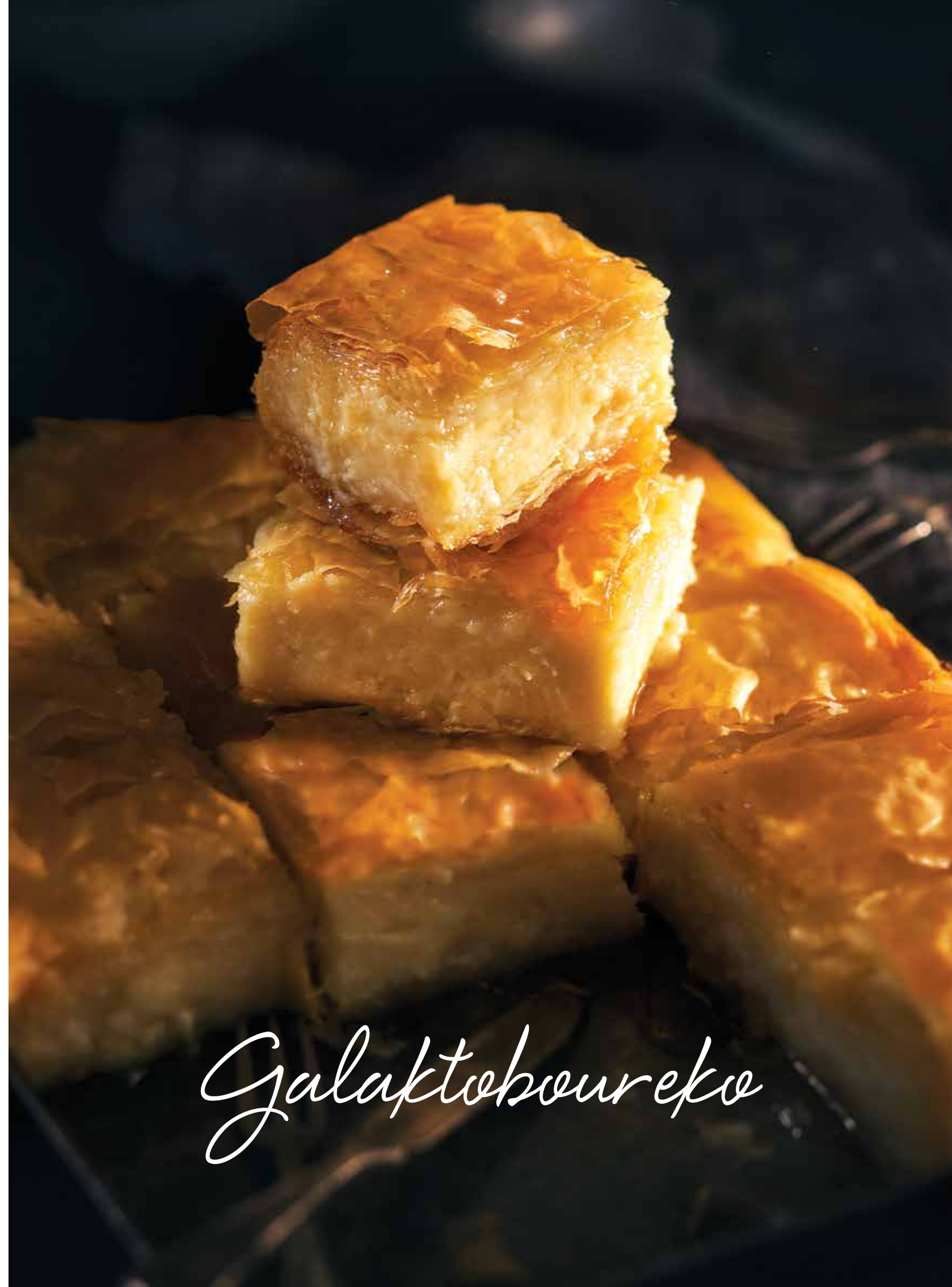
- 71.8996 GALAKTOBOUREKO ROLL 12 pcs BAKED  
2000g/pc | 2pcs/box | 96boxes/ EU | 128boxes/USA
- 71.8247 GALAKTOBOUREKO ROLL 12 pcs UNBAKED WITH SYRUP  
2000g/pc | 2pcs/box | 96boxes/ EU | 128boxes/USA



## KATAIFI



- 71.8198 KATAIFI 12 pcs BAKED  
2000g/pc | 2pcs/box | 96boxes/ EU | 128boxes/USA
- 71.8724 KATAIFI 18 pcs BAKED  
3000g/pc, 1pc/box, 186boxes/ EU, 248boxes/USA
- 71.8935 KATAIFI 24 pcs BAKED  
3000g/pc, 1pc/box, 186boxes/ EU, 248boxes/USA



*Galaktoboureko*

# SYRUP PASTRIES FOR CATERING BAKED

**BAKLAVAS MINI 60 PCS.**



**KATAIFI MINI 60 PCS.**



71.8055 3500g/pc | 3.5kg/pc, 1pc/box | 186boxes/ EU | 248boxes/USA



71.8054 3500g/pc | 3.5kg/pc, 1pc/box | 186boxes/ EU | 248boxes/USA



**BAKLAVA ROLL GIANNIOTIKO 70 PCS.**



71.8223 3200g/pc | 3.2kg/pc, 1pc/box | 186boxes/ EU | 248boxes/USA



**BAKLAVAS MINI NEST WITH CHOCOLATE 70 PCS.**



71.8226 3500g/pc | 3.5kg/pc, 1pc/box | 186boxes/ EU | 248boxes/USA



**BAKLAVA ROLL SARAGLI MINI 78 PCS.**



71.8227 3500g/pc | 3.5kg/pc, 1pc/box | 186boxes/ EU | 248boxes/USA



*Baklava*  
individual

# SYRUP PASTRIES BAKED 1KG



**BAKLAVAS MINI 14PCS.1KG  
(PLASTIC UTENSIL)**

71.8202 BAKED 1000g/pc | 1 pc/box | 288boxes/ EU | 384boxes/USA



**KATAIFI MINI 17 PCS 1KG  
(PLASTIC UTENSIL)**

71.8211 BAKED 1000g/pc | 1 pc/box | 288boxes/ EU | 384boxes/USA



*Kataifi  
individual*



Rodoula company considers as an integral part of its corporate culture the two-way communication with its partners / suppliers or with its potential partners / suppliers in order to become better and to continue creating delicious products and services. You can contact directly the main pillars of the company in the following e-mails:

**Orders: [info@rodoula.gr](mailto:info@rodoula.gr)**

(Orders, deliveries, products)

**Quality Assurance: [quality@rodoula.gr](mailto:quality@rodoula.gr)**

(Matters regarding product quality)

**Marketing: [marketing@rodoula.gr](mailto:marketing@rodoula.gr)**

(for marketing material, photos, banners, table stands etc)



*Taste her talent.*

**ATHENS**

Evrota 24, Acharnes, Greece

**(+30) 210 244 7550**

**THESSALONIKI**

Diavata Ionia 570 08

**(+30) 231 078 5422**

**CRETE**

Heraklion Industrial Area 71 601

**(+30) 2810 333 109**

Email [info@rodoula.gr](mailto:info@rodoula.gr)

[www.rodoula.gr](http://www.rodoula.gr)